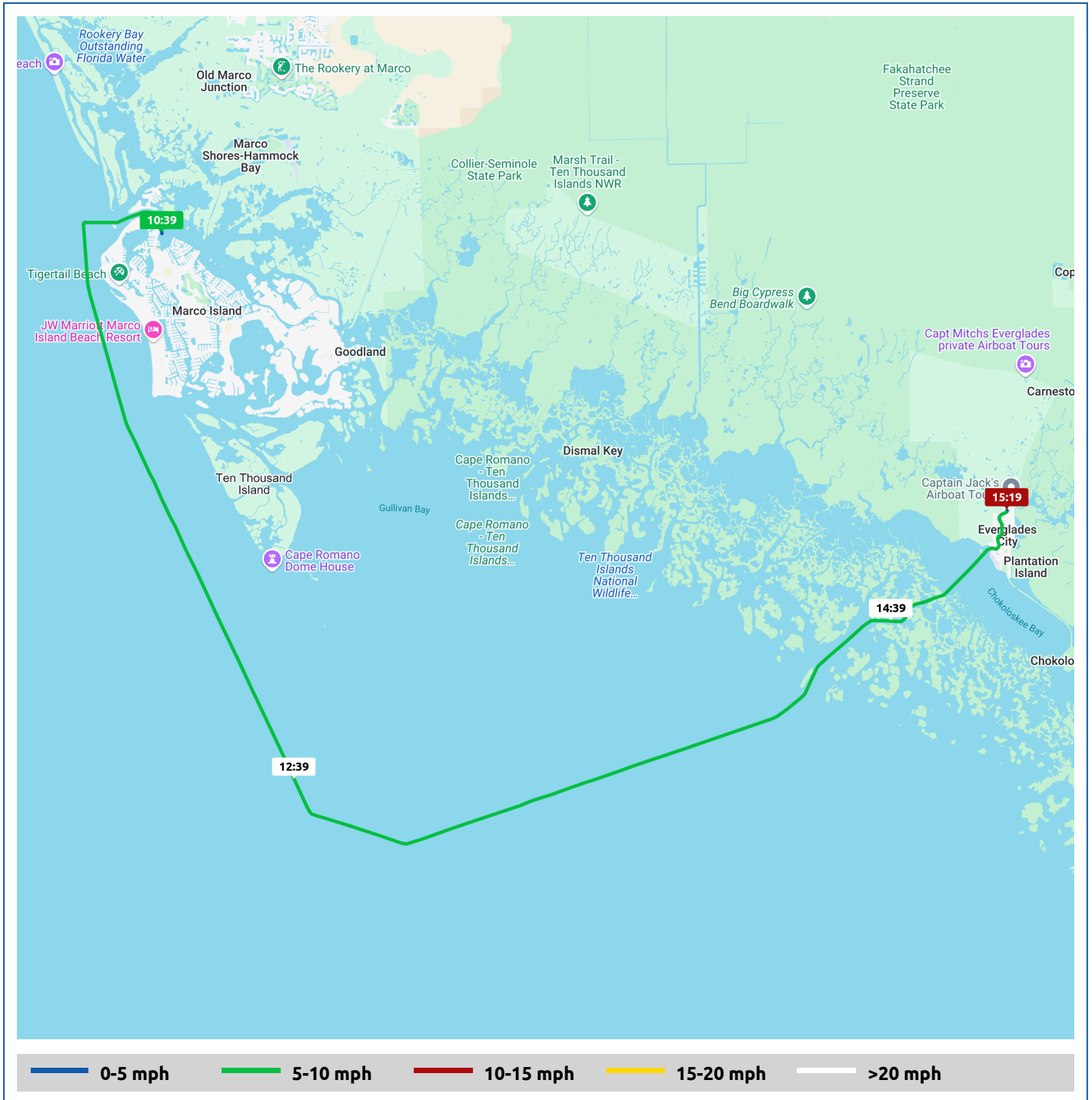


Perfect-Agenda

25 January 2025



Voyages	Underway (hours)	Duration (hours)	Distance (mi)	Average Speed (mph)	Max Speed (mph)
1	4:40	4:56	39.1	8.4	9.4










Perfect-Agenda

25 January 2025



Voyage	Skipper	Passengers/Crew	Commenced	Completed
Marina at Factory Bay to 25° 52.07' N, 81° 23.10' W	Bill and Valerie Henderson "PERFECT AGENDA"		10:38	15:35

 Weather on departure 55.5°F, Wind 11mph NE	 Weather on arrival 69.0°F, Wind 10mph ENE
---	--

Voyage Log	Time	From Start		Interval
		Duration (hours)	Distance (mi)	Avg Speed (mph)
Started voyage at 25° 58.06' N, 81° 43.54' W	10:39	0:00		
 55.5°F, Wind 11mph NE	10:39	0:00		
25° 53.38' N, 81° 44.11' W	11:39	1:00	8.2	8.2
 58.2°F, Wind 13mph NE	11:39	1:00		
25° 46.18' N, 81° 40.34' W	12:39	2:00	17.4	9.1
 60.7°F, Wind 13mph NE	12:39	2:00		
25° 46.26' N, 81° 32.85' W	13:39	3:01	26.1	8.7
 64.1°F, Wind 12mph NE	13:39	3:01		
25° 49.63' N, 81° 25.93' W	14:39	4:01	34.5	8.5
 67.6°F, Wind 11mph ENE	14:39	4:01		
Arrived Chokoloskee Bay	14:52	4:13	36.2	8.1
Departed Chokoloskee Bay	15:05	4:27	37.9	7.3
Stopped voyage at 25° 52.07' N, 81° 23.10' W	15:35	4:56	39.1	2.6
 69.0°F, Wind 10mph ENE	15:35	4:56		